

Housing Europe consists of a network of members, associate members and partners.

Together, they represent **46 national and regional federations**, gathering **43,000 local housing organisations**. Altogether they manage around **25 million dwellings** but also provide a number of other services as domiciliary care, neighbourhood services, urban development and regeneration.

## Our Added Value:



**Policy formulation & Advocacy**



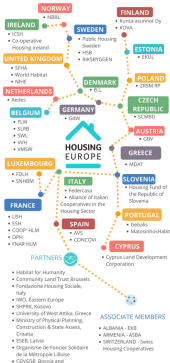
**Knowledge Sharing & Networking**



**Research**

As social, public and co-operatives housing providers we have a vision of Europe which provides access to decent and affordable housing for all communities, which are socially, economically and environmentally sustainable and where all are enabled to reach their full potential.

Expanding our reach, helping in generating affordable housing solutions



# Housing Europe Membership benefits





## Key Benefits

Join HE to:

1. Have a bigger voice at EU level, contributing to the advocacy work
2. Benefit from our research work
3. Access to EU projects
4. Participate in international events
5. Share best practices and lessons learned



## As a Housing Europe member, you will be able to...

1. Contribute to our advocacy strategy
2. Vote at the annual GA
3. Participate in EU Project consortia
4. Participate at the Working Committee meeting
5. Be included in thematic mailing lists
6. Take advantage of exclusive access to housing data
7. Complete access to HE website content
8. Participate in global Partnerships such as the UNECE Housing Committee
9. Feed into the research work of Housing Europe

## Alternatives to membership:

If you are not entitled to full membership, you could join us as a partner or associate member.

However, you are not entitled to ① ② ④ and will be able to participate in Working Committee Meetings on an advisory capacity.



Housing Europe - European Federation of Public, Cooperative and Social Housing  
18 Square De Meeus, 1050 - Ixelles, Brussels

Email: [communications@housingeurope.eu](mailto:communications@housingeurope.eu)  
To join HE, contact our Membership & Events coordinator Abderrahim Khairi  
[www.housingeurope.eu](http://www.housingeurope.eu)  
Tel: +32 2 541 05 63

